



STOLE #08/23

SIZE Length approx. 190 cm, Width approx. 42 cm

ⓑ

MATERIALS Lamana Modena (70% Merino Superfine, 30% Cashmere, approx. 335 m/25 g) 125 g in color Basalt Blue shade 46, 3 mm (US 2/UK 11) knitting needles, 7 stitch markers, tapestry needle

PATTERN NOTE Garter stitch: k all sts in RS and WS rows

Border pattern: see chart; 1 pattern repeat = 4 sts and 4 rows

Main pattern: see chart; 1 pattern repeat = 22 sts and 32 rows

Note: both charts show only RS rows; in WS rows work all sts as they appear, p the yos, work the 2 selvedge stitches on both side edges as garter sts throughout

Gauge: 36 sts and 43 rows in main pattern = 10 × 10 cm

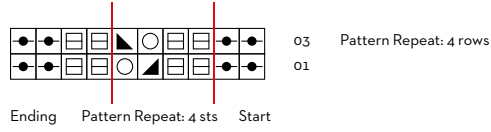
HOW TO CO 154 sts and *k 2, p 2; rep from * to last 2 sts, k 2. In following WS row k the first and last 2 sts, work all other sts as they appear. Change to border pattern and work 18 rows, continue garter st selvedge. Then divide sts as follows: 2 garter selvedge sts, continue border pattern over following 9 sts as given, ending with p 1, work 132 sts (6 pattern repeats) in main pattern, continue border pattern over next 9 sts, beginning with p 1, finally work 2 garter selvedge sts. (For a better overview place a stitch marker each after first 11 sts, then after each repeat of main pattern). In WS rows k the selvedge sts, work the other sts as they appear, p all yos.

Continue as given until you have worked 25 pattern repeats in height (or stole has reached desired length). Change to border pattern (continue garter st selvedge) and work 18 rows, then work 2 rows in k 2, p 2 ribbing. BO all sts loosely according to pattern.

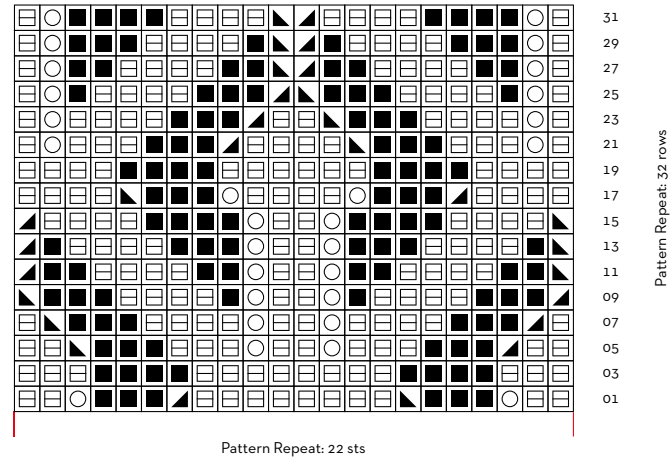
TO FINISH Weave in ends. Carefully stretch stole and pin in place. Cover with a damp cloth and leave until dry.

LAMANA INSTRUCTION

Border Pattern



Main Pattern



LAMANA INSTRUCTION

www.lamana.de



LAMANA INSTRUCTION







www.lamana.de



ABBREVIATIONS

k = knit
p = purl
st(s) = stitch(es)
RS = right side
WS = wrong side
yo = yarn over
CO = cast on
BO = bind off
rep = repeat
k2tog = knit 2 stitches together

KNITTING SYMBOLS

-  1 garter st (RS: k 1; WS: k 1)
-  1 yo (RS); p 1 (WS)
-  k 1 (RS), p 1 (WS)
-  p 1 (RS), k 1 (WS)
-  k2tog (RS); p 1 (WS)
-  ssk (RS): slip 1 st knitwise, k next st, then pass slipped st over; p 1 (WS)

SKILL LEVEL

- Ⓐ easy Ⓑ intermediate Ⓒ advanced