



### SHAWL #05/08

**SIZE** approx. 210 cm × 90 cm

ⓑ

---

**MATERIALS** Lamana Cusi (100% Alpaca, approx. 225 m/50 g) 150 g in colour Silk Grey shade 03, 4,5 mm knitting needles, tapestry needle

---

**PATTERN NOTE** Main Pattern: follow chart; only RS rows are shown; in WS rows k first and last 3 sts and p all other sts

---

**HOW TO** Cast on 5 sts and k 1 row, then start with row 1 of chart. Repeat pattern (20 rows) 16 times (or until desired length), end with 6 k rows (garter stitch). Cast off loosely.

---

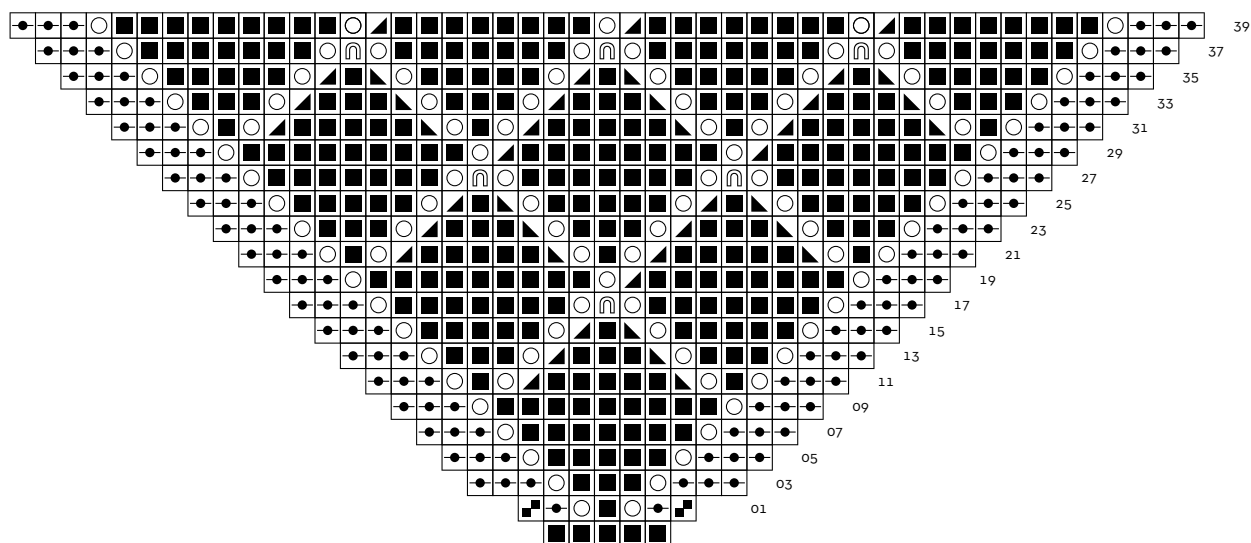
**TO FINISH** Weave in ends. Lightly stretch piece and let it dry under a wet cloth.

---

# LAMANA

## INSTRUCTION

[www.lamana.de](http://www.lamana.de)







### ABBREVIATIONS

k = knit  
p = purl  
st(s) = stitch(es)  
RS = right side  
WS = wrong side

### SKILL LEVEL

Ⓐ easy   Ⓑ intermediate   Ⓒ advanced

### KNITTING SYMBOLS

○ yarn over

■ knit

▴ knit 2 sts together

▴ slip 1 st knitwise, knit 1, pass slipped st over

▴ slip 2 sts knitwise, knit 1, pass slipped sts over

■ make 2 k stitches out of 1

◼ garter st: knit in RS and WS rows